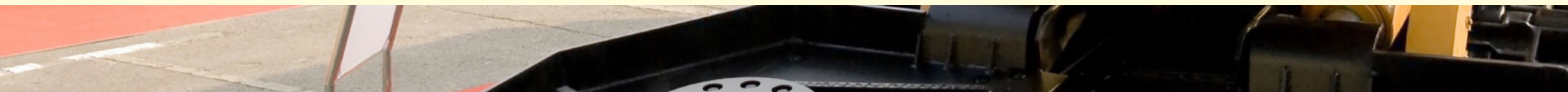




CONSTRUCTION TECHNOLOGY, BUILDING-PRODUCTS

.....
Industries for cement, quarries (sand, gravel, stone), brickyards, civil-engineering, well sinking, steel and metal construction rely on **capilla**.



THE PROBLEM

Impact, abrasion, erosion, corrosion, heat and overload slowly but surely reduce the product quality, lead to a declining functionality, performance and a limited load capacity.

More and more often, this results in longer lasting plant downtimes and lets operating costs rise to incalculable amounts.

THE SOLUTION

capilla-products reduce plant downtimes caused by repair and maintenance, increase product reliability and quality, decrease energy costs and thus enhance the productivity remarkably.

All **capilla**-products were created with more than 50 years of experience in forging, the most demanding welding application.

TYPICAL APPLICATIONS

Grinders, rotary kilns, presses, buckets, sifters, cones, excavator parts, conveyors, breakers, dies, earthmoving equipment, mixers, screw extruders, furnaces, drill heads, drill pipes, pumps, platforms, staircases, scaffoldings, bridges, ramps, cranes, masts.

Demanding welders all over the world put their trust in the **capilla**-quality: in maintenance, repairs and production.

capilla always delivers the most suitable product.

capilla - The number 1 for all demanding metal-workers.

Below you can find a brief extract of the stick-electrode range manufactured by **capilla**, which are specifically used in the Construction Technology. A number of other products, as well as solutions for other welding processes can alternatively be provided by **capilla**.

	Product Description	Applications	Analysis [weight-%]	
49 KBS AWS A 5.1: E 7016	Special (double coated) stick electrode suitable especially for crack-free welding at service temperatures in the range of -40°C up to 450°C in all positions; suitable as well on AC.	For fusion welding of C- and C-Mn-steels such as: S 185 - S 355 JOC, P 235 GH, P 265 GH, P 295 GH, P 120 N - P 360 N, P 255 NH - P 355 NH, GS 38 - GS 52.	C	max. 0,06
			Mn	max. 0,9
			Si	max. 0,7
			Fe	Rest
316 L AWS A 5.4: E 316 L-16	Rutile-basic coated stick electrode for welding of austenitic stainless Cr-Ni-Mo steels with extra low carbon content. Service temperatures up to 400°C.	Suitable for materials as: 1.4401, 1.4404, 1.4406, 1.4408, 1.4420, 1.4435, 1.4436, 1.4571, 1.4573, 1.4580, 1.4581, 1.4583.	C	max. 0,03
			Cr	18,0-20,0
			Ni	11,0-13,0
			Mo	2,5-3,0
			Fe	Rest
54 W EN 14700: E Fe 7-55-gpt	Basic coated Cr-Mo-V-alloyed stick electrode for tough and wear-resistant deposits on parts that are subject to abrasive wear and heavy impacts. Deposits without cracks and pinholes. Deposit thickness as required.	Hardfacing of dredger teeth, crusher jaws, screw conveyors, coal cutters, beaters, edge runners, hammers etc.	C	0,5-0,8
			Cr	7,0-10,0
			Mn	0,5-0,7
			Mo	0,5-1,0
			V	1,0-1,2
			Fe	Rest

Experts trust **capilla**.



TÜV NORD

CERTIFICATE

Management system as per
DIN EN ISO 9001 : 2015

In accordance with TÜV NORD CERT procedures, it is hereby certified that

Capilla Schweißmaterialien GmbH
Westring 48 - 50
33818 Leopoldshöhe
Germany

capilla
Internationale Schweißkompetenz
Made in Germany

applies a management system in line with the above standard for the following scope

Development, manufacture and sale of welding consumables

Certificate Registration No. 04 100 960464
Audit Report No. 3520 8477

Valid from 2018-02-20
Valid until 2021-02-19
Initial certification 1996

Jenssen-Landolt
Certification Body
at TÜV NORD CERT GmbH

Essen, 2018-01-29

This certification was conducted in accordance with the TÜV NORD CERT auditing and certification procedures and is subject to regular surveillance audits.

TÜV NORD CERT GmbH Langemarckstraße 20 45141 Essen www.tuev-nord-cert.com

IAF **DAKKS**
Deutsche
Akkreditierungsstelle
D-2M-12007-01-01

capilla Schweißmaterialien GmbH

Westring 48-50 D-33818 Leopoldshöhe
T +49 (0)5202 97790-0 F +49 (0)5202 97790-19
info@capilla-group.com www.capilla-group.com